



EUROSTAMP QUALITY DEPARTMENT

FITTING TEST ON THE CAR

71FT101.44.9400_14-12-2016

DESCRIZIONI: DESCRIPTION			
PARTICOLARE: PART	PARAURTI ANTERIORE INFERIORE GOFFRATO LOWER FRONT BUMPER TEXTURED FINISH		
VETTURA: CAR	OPEL / VAUXHALL MOKKA 11/2014 >		
CODICE: REFERENCE	101.44.9400	EQUIVALENTE A O.E. SIMILAR TO O.E.:	1401085 / 95299465
N° DOCUMENTO	71/16	DATA	14/03/2017
			
PARTI ORIGINALI MONTATE SUL PARAURTI: ORIGINAL PARTS FITTED ON THE BUMPER			
GRIGLIA RADIATORE: RADIATOR GRILLE	1320250 / 95391779		
GRIGLIA INFERIORE: LOWER GRILLE	1400971 / 42334417		
GRIGLIA INFERIORE DESTRA: RIGHT LOWER GRILLE	1400984 / 95235058		
GRIGLIA INFERIORE SINISTRA: LEFT LOWER GRILLE	1400983 / 25980484		
SPOILER: SPOILER	1401107 / 95021807		
FENDINEBBIA DESTRO: RIGHT FOG LAMP	1710220 / 95419301		
FENDINEBBIA SINISTRO: LEFT FOG LAMP	1710220 / 95419301		
TAPPO GANCIO TRAINO: TOW-HOOK LID	1405181 / 25980570		
MODANATURA CENTRALE CENTRAL BUMPER MOULDING	1409012 / 95276671		



EUROSTAMP QUALITY DEPARTMENT

FITTING TEST ON THE CAR

71FT101.44.9400_14-12-2016

REPORT FOTOGRAFICO FITTING TEST:

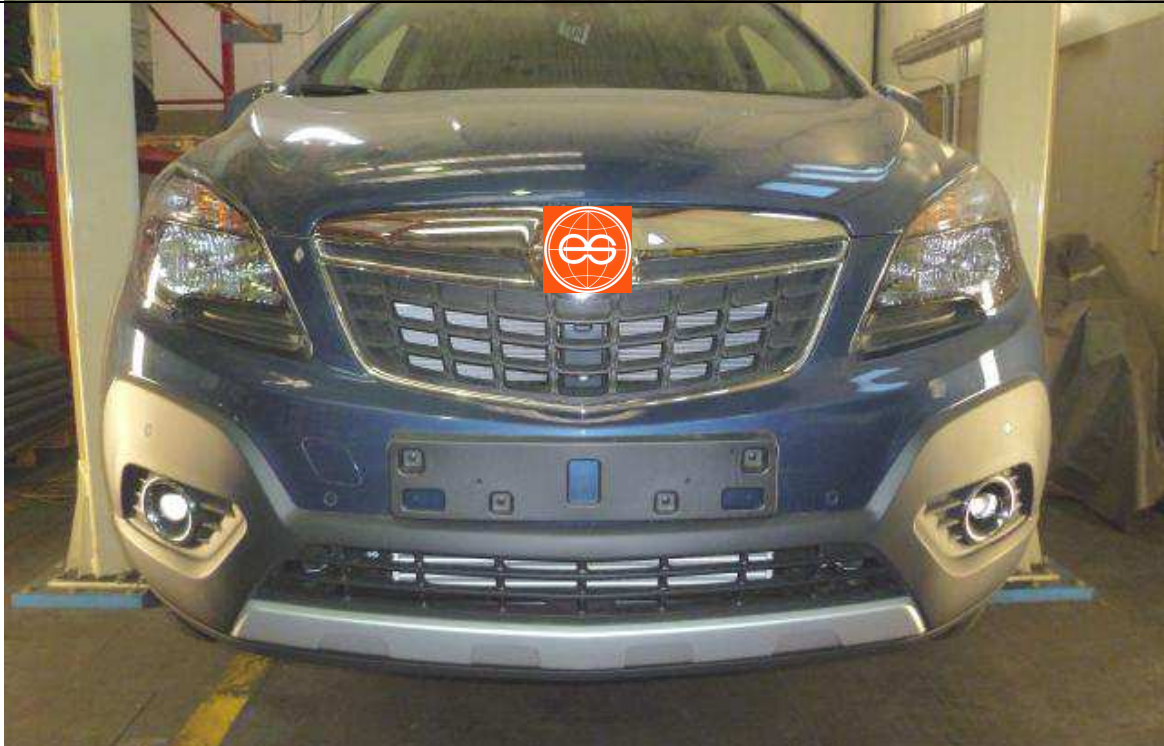
PHOTO REPORT FITTING TEST

PARAURTI ORIGINALE:

O.E. BUMPER

PARAURTI EUROSTAMP:

EUROSTAMP BUMER





EUROSTAMP QUALITY DEPARTMENT

FITTING TEST ON THE CAR

71FT101.44.9400_14-12-2016





EUROSTAMP QUALITY DEPARTMENT

FITTING TEST ON THE CAR

71FT101.44.9400_14-12-2016

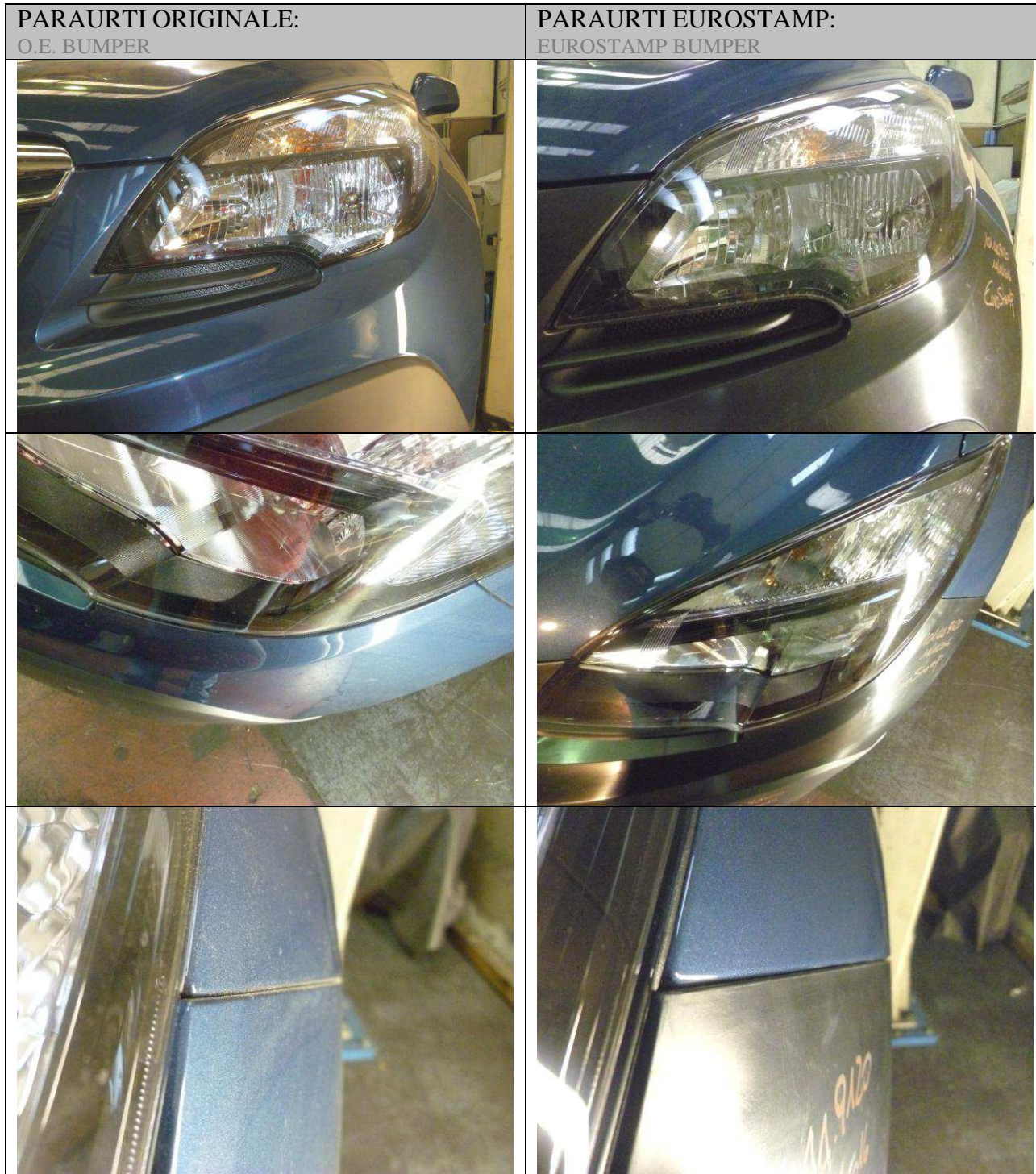




EUROSTAMP QUALITY DEPARTMENT

FITTING TEST ON THE CAR

71FT101.44.9400_14-12-2016





EUROSTAMP QUALITY DEPARTMENT

FITTING TEST ON THE CAR

71FT101.44.9400_14-12-2016





EUROSTAMP QUALITY DEPARTMENT

FITTING TEST ON THE CAR

71FT101.44.9400_14-12-2016

PARAURTI ORIGINALE: O.E. BUMPER	PARAURTI EUROSTAMP: EUROSTAMP BUMPER
	
	
	
	



EUROSTAMP QUALITY DEPARTMENT

FITTING TEST ON THE CAR

71FT101.44.9400_14-12-2016

PARAURTI ORIGINALE: O.E. BUMPER	PARAURTI EUROSTAMP: EUROSTAMP BUMPER
	
	
	
	



EUROSTAMP QUALITY DEPARTMENT

FITTING TEST ON THE CAR

71FT101.44.9400_14-12-2016

PARAURTI ORIGINALE: O.E. BUMPER	PARAURTI EUROSTAMP: EUROSTAMP BUMPER
	
	
	
	