



EUROSTAMP QUALITY DEPARTMENT

FITTING TEST ON THE CAR

41FT101.42.9120_18-11-2015

DESCRIZIONI:

DESCRIPTION

PARTICOLARE:
PART

PARAURTI ANTERIORE CON PRIMER
FRONT BUMPER WITH PRIMER

VETTURA:
CAR

OPEL / VAUXHALL CORSA E 11/2014 >

CODICE:
REFERENCE

101.42.9120

EQUIVALENTE A O.E.
SIMILAR TO O.E.:

1401189

N° DOCUMENTO

41/16

DATA

18/11/2015



PARTI ORIGINALI MONTATE SUL PARAURTI:

ORIGINAL PARTS FITTED ON THE BUMPER

GRIGLIA RADIATORE:

RADIATOR GRILLE

1320280

GRIGLIA INFERIORE:

LOWER GRILLE

1320245

GRIGLIA INFERIORE DESTRA:

RIGHT LOWER GRILLE

1223306

GRIGLIA INFERIORE SINISTRA:

LEFT LOWER GRILLE

1223302

SPOILER DESTRO:

RIGHT SPOILER

1402019

SPOILER SINISTRO:

LEFT SPOILER

1402025

FENDINEBBIA DESTRO:

RIGHT FOG LAMP

1710044

FENDINEBBIA SINISTRO:

LEFT FORG LAMP

1710034

TAPPO GANCIO TRAINO:

TOW-HOOK LID

1405246

MODANATURA DESTRA:

RIGHT MOULDING

1401147

MODANATURA SINISTRA:

LEFT MOULDING

1401152



EUROSTAMP QUALITY DEPARTMENT

FITTING TEST ON THE CAR

41FT101.42.9120_18-11-2015

REPORT FOTOGRAFICO FITTING TEST:

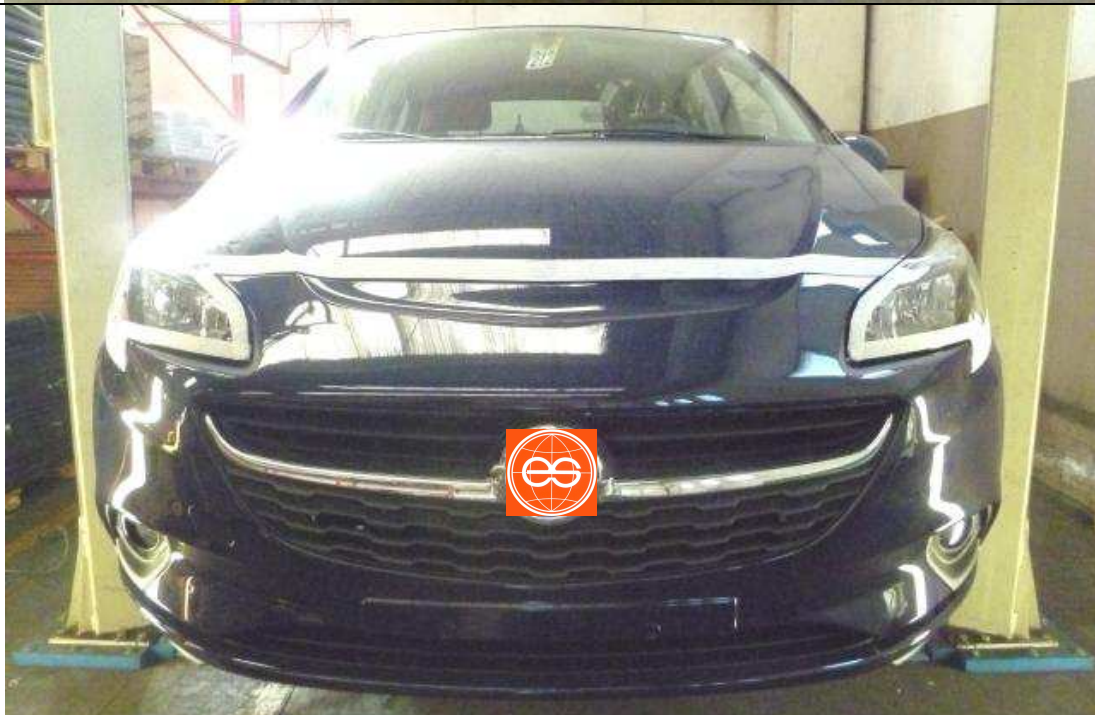
PHOTO REPORT FITTING TEST

PARAURTI ORIGINALE:

O.E. BUMPER

PARAURTI EUROSTAMP:

EUROSTAMP BUMER





EUROSTAMP QUALITY DEPARTMENT

FITTING TEST ON THE CAR

41FT101.42.9120_18-11-2015





EUROSTAMP QUALITY DEPARTMENT

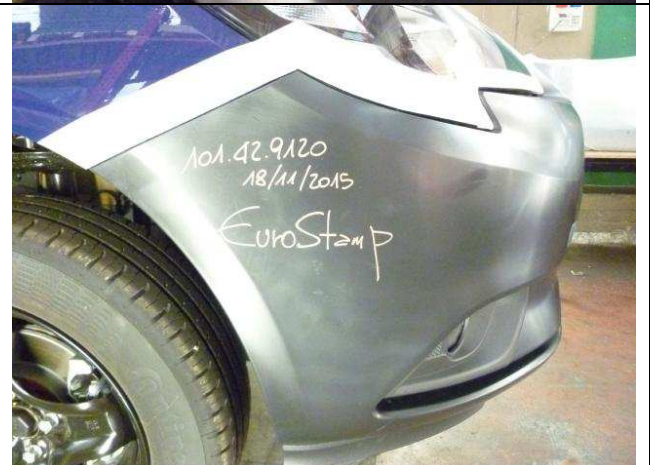
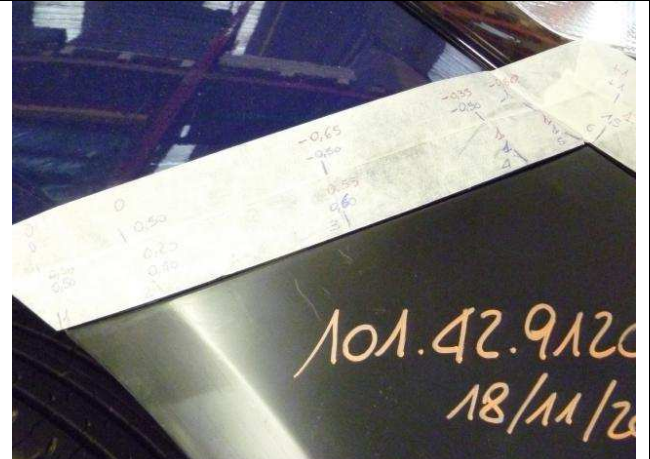
FITTING TEST ON THE CAR

41FT101.42.9120_18-11-2015

PARAURTI ORIGINALE:
O.E. BUMPER



PARAURTI EUROSTAMP:
EUROSTAMP BUMPER





EUROSTAMP QUALITY DEPARTMENT

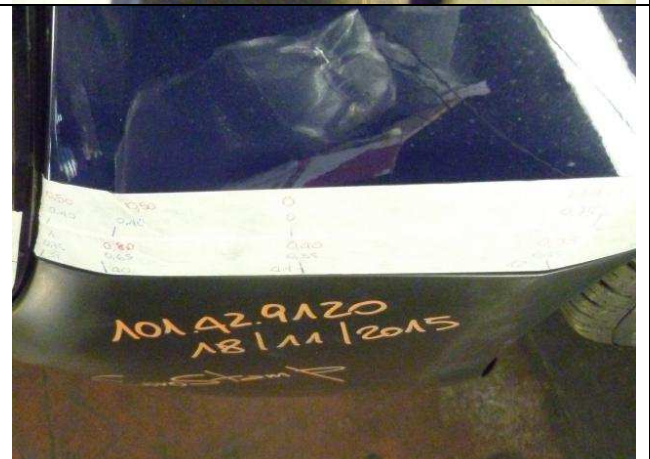
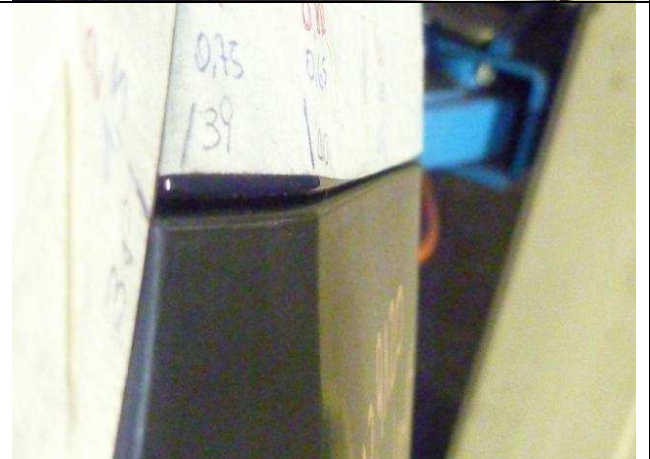
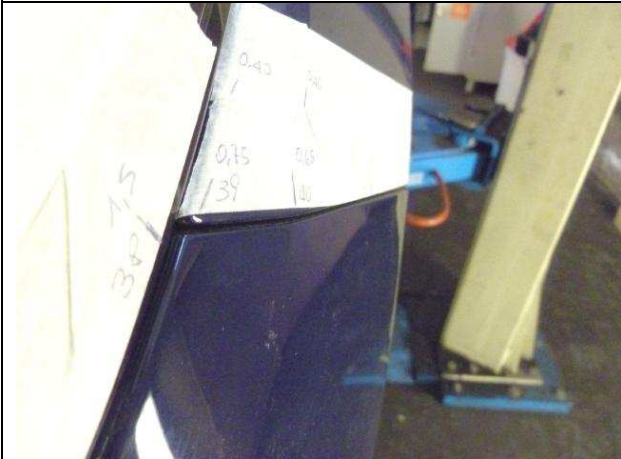
FITTING TEST ON THE CAR

41FT101.42.9120_18-11-2015

PARAURTI ORIGINALE:
O.E. BUMPER



PARAURTI EUROSTAMP:
EUROSTAMP BUMPER





EUROSTAMP QUALITY DEPARTMENT

FITTING TEST ON THE CAR

41FT101.42.9120_18-11-2015

PARAURTI ORIGINALE:
O.E. BUMPER



PARAURTI EUROSTAMP:
EUROSTAMP BUMPER

