



# EUROSTAMP QUALITY DEPARTMENT

## FITTING TEST ON THE CAR

46FT101.24.9149\_27-07-2016

| DESCRIZIONI:<br>DESCRIPTION   |   |  |                    |
|---|---|--|--------------------|
| <b>PARTICOLARE:</b><br>PART   | PARAURTI ANTERIORE CON PRIMER – CON FORI LAVAFARI<br>FRONT BUMPER WITH PRIMER – WITH WASH JET HOLES |  |                    |
| <b>VETTURA:</b><br>CAR  | OPEL / VAUXHALL ASTRA J GTC 11/2011 >   |  |                    |
| <b>CODICE:</b><br>REFERENCE   | 101.24.9149   | EQUIVALENTE A O.E.<br>SIMILAR TO O.E.: | 1400911 / 13352304 |
| <b>N° DOCUMENTO</b>   | 46/16   | <b>DATA</b>                            | 18/07/2016         |
|  |   |  |                    |
| PARTI ORIGINALI MONTATE SUL PARAURTI:<br>ORIGINAL PARTS FITTED ON THE BUMPER        |   |  |                    |
| <b>GRIGLIA RADIATORE:</b><br>RADIATOR BUMPER GRILLE                                 | 1320191   |  |                    |
| <b>MODANATURA CENTRALE:</b><br>CENTRAL BUMPER MOULDING                              | 1322009   |  |                    |
| <b>GRIGLIA CENTRALE:</b><br>LOWER CENTRAL BUMPER GRILLE                             | 1320189   |  |                    |
| <b>TAPPO GANCIO TRAINO GOFFRATO:</b><br>FRONT BUMPER TOW-HOOK LID TEXTURED          | 1405119   |  |                    |
| <b>TAPPO GANCIO TRAINO CON PRIMER:</b><br>FRONT BUMPER TOW-HOOK LID WITH PRIMER     | 1405120   |  |                    |
| <b>GRIGLIA INFERIORE DESTRA:</b><br>RIGHT LOWER BUMPER GRILLE                       | 1400939   |  |                    |
| <b>GRIGLIA INFERIORE SINISTRA:</b><br>LEFT LOWER BUMPER GRILLE                      | 1400938   |  |                    |
| <b>SPOILER ANTERIORE DESTRO:</b><br>RIGHT FRONT BUMPER SPOILER                      | 1400944   |  |                    |
| <b>SPOILER ANTERIORE SINISTRO:</b><br>LEFT FRONT BUMPER SPOILER                     | 1400943   |  |                    |
| <b>FENDINEBBIA DESTRO:</b><br>RIGHT FOG LAMP  | 1710203   |  |                    |
| <b>FENDINEBBIA SINISTRO:</b><br>LEFT FORG LAMP                                      | 1710179   |  |                    |



# EUROSTAMP QUALITY DEPARTMENT

## FITTING TEST ON THE CAR

46FT101.24.9149\_27-07-2016

### REPORT FOTOGRAFICO FITTING TEST:

PHOTO REPORT FITTING TEST

PARAURTI ORIGINALE:

O.E. BUMPER

PARAURTI EUROSTAMP:

EUROSTAMP BUMER





# EUROSTAMP QUALITY DEPARTMENT

## FITTING TEST ON THE CAR

46FT101.24.9149\_27-07-2016

PARAURTI ORIGINALE:  
O.E. BUMPER



PARAURTI EUROSTAMP:  
EUROSTAMP BUMPER





# EUROSTAMP QUALITY DEPARTMENT

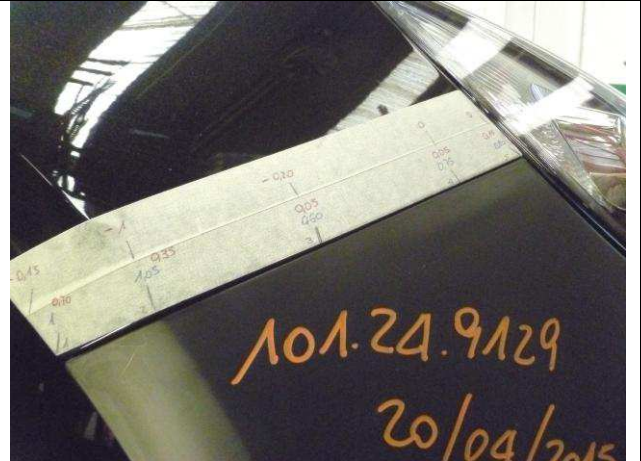
## FITTING TEST ON THE CAR

46FT101.24.9149\_27-07-2016

PARAURTI ORIGINALE:  
O.E. BUMPER



PARAURTI EUROSTAMP:  
EUROSTAMP BUMPER





# EUROSTAMP QUALITY DEPARTMENT

## FITTING TEST ON THE CAR

46FT101.24.9149\_27-07-2016





# EUROSTAMP QUALITY DEPARTMENT

## FITTING TEST ON THE CAR

46FT101.24.9149\_27-07-2016





# EUROSTAMP QUALITY DEPARTMENT

## FITTING TEST ON THE CAR

46FT101.24.9149\_27-07-2016

| PARAURTI ORIGINALE:<br>O.E. BUMPER  | PARAURTI EUROSTAMP:<br>EUROSTAMP BUMPER  |
|---|--|
|    |    |
|    |    |
|   |   |
|  |  |
|  |  |



# EUROSTAMP QUALITY DEPARTMENT

## FITTING TEST ON THE CAR

46FT101.24.9149\_27-07-2016

| PARAURTI ORIGINALE:<br>O.E. BUMPER  | PARAURTI EUROSTAMP:<br>EUROSTAMP BUMPER  |
|---|--|
|    |    |
|   |   |
|  |  |
|  |  |





# EUROSTAMP QUALITY DEPARTMENT

## FITTING TEST ON THE CAR

46FT101.24.9149\_27-07-2016





# EUROSTAMP QUALITY DEPARTMENT

## FITTING TEST ON THE CAR

46FT101.24.9149\_27-07-2016

